

# Haier

## Solar Energy Solutions - Panels, Inverters, Batteries

A single platform for residential and commercial solar energy.





## Our Brand

Empowering smarter, happier, and healthier living, Haier leads with smart technologies across a range of home appliances. As the top global major appliances brand for over a decade, Haier's products are designed to enable better living through innovation.\*



### Global Scale

OPERATING IN  
160 COUNTRIES



### Innovation + Quality

10 R&D CENTRES  
GLOBALLY



### Service + Support

NATIONWIDE  
SUPPORT



### Warranty Protection

BACKED BY TRUSTED  
WARRANTIES

### Brands you can trust

As one of the world's largest brands, Haier provides a comprehensive range of commercial and residential solar products, air conditioning, water heating, and appliances, all designed for an integrated, connected system.

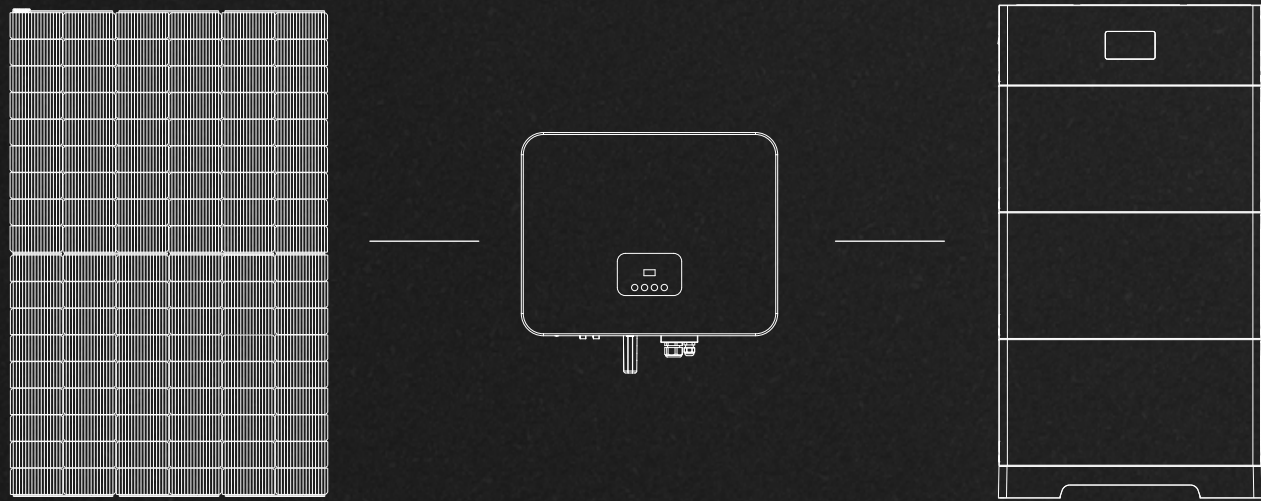
Within the Haier solar suite, a range of products developed by Nahui, a renewable energy platform wholly owned by the Haier Group, offers a fully connected suite of solar inverters, storage solutions, and solar panels, all rigorously tested for reliability in global markets.

\* Data source: Euromonitor International Limited; Consumer Appliances 2024ed, % unit share, 2023 volume sales data. Major Appliances category is the sum of dishwashers, home laundry appliances, large cooking appliances, microwaves and refrigeration appliances. Volume sales refers to sales in retail channel, builder merchants and construction channel.



# Solar Solutions

Experience a seamless solar solution, offering a unified solar platform tailored to both residential and commercial needs. Haier delivers panels, batteries and inverters from a single supplier, removing the need for multiple partners, warranties and customer care contacts. Backed by Haier's trusted warranties, you can confidently begin your solar journey.



## Panels

Panels for both residential and commercial use with stylish options to suit any home or business.

## Inverters

Choose from a variety of inverters, from the economical, space-efficient Nahui range to the high-performance three-phase inverter.

## Batteries

Our solar batteries offer versatile solutions for homes and businesses with easy installation and robust safety features. Providing reliable energy storage for any solar setup.

## A single platform

Build a complete solar PV system that meets your design and budget needs by mixing and matching products, all from a single supplier.

## Respect for the planet

Help lower your household, commercial, and industrial carbon emissions with solar power, a clean, renewable energy source that preserves environmental quality.

## Efficient design

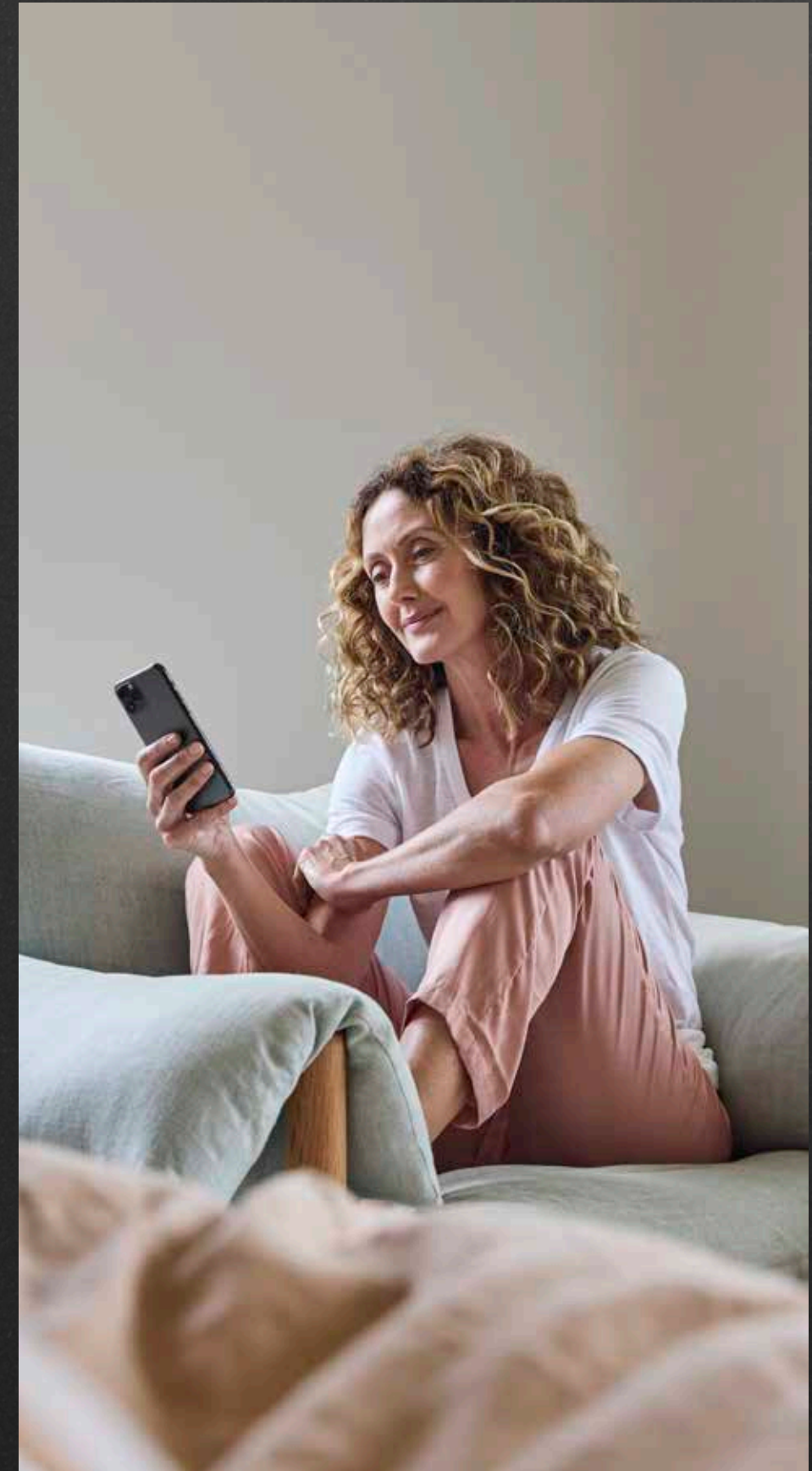
Enjoy consistent performance with a range of products, which combine advanced technology with sleek, thoughtful design.

## Connected living

Gain full visibility and monitor your solar energy performance via the Haier-owned Nahui Energy app.

## Peace of mind

Rest assured with your solar investment, protected by trusted Haier-backed warranties, and supported by local experts available to assist with any questions or concerns.







## Panels

Effective energy production whilst reducing your carbon emissions.



### High efficiency

A range of panels that utilise TOPCon, providing higher efficiency, better performance in low light, reduced power degradation and a higher temperature coefficient.\*

### Enhanced durability

Built to withstand moisture and temperature changes, ensuring long-term reliability. With minimal maintenance required, all panels are covered by Haier-backed warranties providing peace of mind.

### Extensive range

Offering a wide range of solar panels to fit different needs and budgets, providing the right balance of cost and performance for homes and businesses.

\* Compared to standard PERC technology.



## Residential

High performing residential panel range, featuring TOPCon Technology, with durability, tested against salt, mist, and ammonia.

Nahui Solar Panel, TOPCon,  
Single Glass Module, 410-440W

NHO108MN



Nahui Solar Panel, TOPCon,  
Single Glass Module, 410-440W

NHO108MNB



Nahui Solar Panel, TOPCon,  
Single Glass Module, 460-490W

NHO120MNB



- **PID resistance**  
Excellent anti-PID performance guaranteed through optimised mass-production processes and materials control.
- **SMBB technology**  
Better light trapping and current collection to improve module power output and reliability.
- **Durability**  
High resistance to salt mist and ammonia.
- **Enhanced mechanical load**  
Certified to withstand wind loads up to 2400 Pascals and snow loads up to 5400 Pascals.

- **PID resistance**  
Excellent anti-PID performance guaranteed through optimised mass-production processes and materials control.
- **SMBB technology**  
Better light trapping and current collection to improve module power output and reliability.
- **All black**  
Blend seamlessly with roofs, offering a sleek, modern design.
- **Enhanced mechanical load**  
Certified to withstand wind loads up to 2400 Pascals and snow loads up to 5400 Pascals.

- **PID resistance**  
Excellent anti-PID performance guaranteed through optimised mass-production processes and materials control.
- **SMBB technology**  
Better light trapping and current collection to improve module power output and reliability.
- **All black**  
Blend seamlessly with roofs, offering a sleek, modern design.
- **Enhanced mechanical load**  
Certified to withstand wind loads up to 2400 Pascals and snow loads up to 5400 Pascals.

## Commercial

The range of larger, high-capacity panels are perfect for homes with greater energy needs and commercial use, delivering high performance with TOPCon Technology.\*

Nahui Solar Panel, TOPCon,  
Single Glass Module, 550-580W

NHO144MN



Nahui Solar Panel, TOPCon,  
Single Glass Module, 670-700W

NHO132MN



- **PID resistance**  
Excellent anti-PID performance guaranteed through optimised mass-production processes and materials control.
- **SMBB technology**  
Better light trapping and current collection to improve module power output and reliability.
- **Durability**  
High resistance to salt mist and ammonia.
- **Enhanced mechanical load**  
Certified to withstand wind loads up to 2400 Pascals and snow loads up to 5400 Pascals.

- **PID resistance**  
Excellent anti-PID performance guaranteed through optimised mass-production processes and materials control.
- **SMBB technology**  
Better light trapping and current collection to improve module power output and reliability.
- **Durability**  
High resistance to salt mist and ammonia.
- **Enhanced mechanical load**  
Certified to withstand wind loads up to 2400 Pascals and snow loads up to 5400 Pascals.

# Inverters

Convert solar energy into useable electricity efficiently with Haier inverters.

Explore a selection of inverters, from the economical and space-efficient Nahui range to the high-performance three-phase inverter, designed for high efficiency and performance.



## High protection rating

With an IP65 protection rating, all inverters within the range are suitable for installation both indoors and outdoors.

## Enhanced energy output

High-voltage Haier inverters include advanced controllers to optimise power output, improve performance in shaded areas, and ensure reliability.

## Versatile system design

Advanced inverter models support complex layouts and easy scalability, accommodating diverse roof orientations and configurations.

## Generous DC:AC ratio

Even the most compact and economical inverters have a DC:AC ratio of 1.5x, helping customers find the optimal balance of cost vs. performance.

## Haier Hybrid PV Inverter, Three-Phase, 5-10kW

HH3P-KA1/HU



- **4 MPPTs**  
Four integrated MPPTs, suitable for houses with multi-pitched rooftops, supporting high current solar panels.
- **IP66 protection rating**  
Supports unbalanced and half-wave loads on both the grid and backup port.
- **Double current**  
Maximum battery charge and discharge current: 50A (compare to the common industrial level of 25A).
- **Overload capacity**  
Backup overload capacity increased to 1.6 times for 60 seconds, supporting refrigeration and AC inductive loads.

## Nahui Hybrid PV Inverter, Single-Phase, 3-6kW

N1PH-1NK



- **Super efficiency**  
Battery charge and discharge efficiency 10-15% higher than that of low voltage products.
- **Smart control**  
Supports remote firmware upgrade and working modes.
- **Safe**  
IP65, for outdoor application.
- **High yields**  
Supports 1.5 DC:AC ratio to connect more PV capacity.

# Batteries

Expandable and flexible battery solutions for residential and commercial use.

Solar batteries that offer versatile solutions for residential and commercial use. Enjoy easy installation, high efficiency, advanced safety features, expandable capacity, durability, and flexible connections.



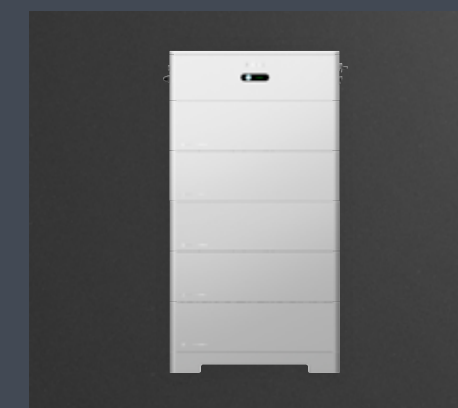
## Haier Battery, High Voltage ESS, 5-60kWh

HHS-1XK



## Nahui Battery, High Voltage ESS, 10-40kWh

NHS-1YK



### Flexible system

With the ability to connect up to eight Nahui range modules in a series for up to 40kWh, and eight systems in parallel for up to 320kWh. This flexibility allows you to configure your system to meet your specific energy needs.

### Weather protected

Haier batteries are rated IP66, meaning they are dust-tight and protected against the elements. You can install them indoors or outdoors with confidence.

### Easy installation

Battery ranges boasting large capacities, with the ability to be stacked without wiring, making installation easy. They are scalable, allowing modifications and expansions as your energy needs grow.

### DC-DC boost

Haier batteries efficiently increase the voltage of the direct current (DC) electricity they store, making it compatible with a wide range of devices and systems.

- **DC-DC boost**  
Built-in DC-DC boost voltage up to 400V, avoiding overheating caused by high currents.
- **Safe**  
IP65 rated, with LFP prismatic cells, three-layer safety protection, and five patented technologies.
- **Flexible scalability**  
5kWh modular design, scalable from 5kWh to 60kWh. Stackable to 20kWh.
- **Harsh environment**  
-10°C to 50°C operating temperature.

- **Flexible scalability**  
5kWh modular design, scalable from 10kWh to 40kWh. Stackable to 20kWh and extendable to 40kWh.
- **Harsh environment**  
-20°C to 50°C discharge.
- **Safe**  
IP65, for outdoor application.
- **Fool-proof design**  
Stack and play, no wiring stack and play connection.



# Panel Specifications

Model NHO108-410MN  
 Model NHO108-420MN  
 Model NHO108-430MN  
 Model NHO108-440MN

Model NHO108-410MNB  
 Model NHO108-420MNB  
 Model NHO108-430MNB  
 Model NHO108-440MNB

Model NHO120-460MNB  
 Model NHO120-470MNB  
 Model NHO120-480MNB  
 Model NHO120-490MNB



Model NHO144-550MN  
 Model NHO144-560MN  
 Model NHO144-570MN  
 Model NHO144-580MN

Model NHO132-670MN  
 Model NHO132-680MN  
 Model NHO132-690MN  
 Model NHO132-700MN



SKU/Model number		NHO108-410MN	NHO108-420MN	NHO108-430MN	NHO108-440MN	NHO108-410MNB	NHO108-420MNB	NHO108-430MNB	NHO108-440MNB	NHO120-460MNB	NHO120-470MNB	NHO120-480MNB	NHO120-490MNB
CA number	Units	44085	44087	44089	44091	44162	44163	44164	44165	44166	44167	44168	44169
Total capacity	kW	410	420	430	440	410	420	430	440	460	470	480	490

Features		Topcon											
Technology		Topcon											
No of cells		108(12*9)						182*91					
Type		White						Black					
Dimensions	mm	1722*1134*30						1903*1134*30					
Weight	kg	21.5						23.8					
Front glass		3.2 mm solar glass with anti-reflective surface treatment											
Junction box		IP68 3 diodes											
Frame		Anodized Aluminium Alloy											
Max wind and snow loads		2400Pa/5400Pa											

Electrical data STC		NHO108-410MN	NHO108-420MN	NHO108-430MN	NHO108-440MN	NHO108-410MNB	NHO108-420MNB	NHO108-430MNB	NHO108-440MNB	NHO120-460MNB	NHO120-470MNB	NHO120-480MNB	NHO120-490MNB
Peak power	Pmax	410	420	430	440	410	420	430	440	460	470	480	490
Max power voltage	Vmp	31.13	31.51	31.88	32.24	31.13	31.51	31.88	32.24	34.72	35.05	35.37	35.70
Max power current	Imp	13.17	13.33	13.49	13.65	13.17	13.33	13.49	13.65	13.25	13.41	13.57	13.73
Open circuit voltage	Voc	37.73±3%	38.11±3%	38.49±3%	38.87±3%	37.73±3%	38.11±3%	38.49±3%	38.87±3%	42.05±3%	42.38±3%	42.70±3%	43.03±3%
Short circuit current	Isc	13.91±3%	14.07±3%	14.23±3%	14.39±3%	13.91±3%	14.07±3%	14.23±3%	14.39±3%	13.99±3%	14.15±3%	14.31±3%	14.47±3%
Module efficiency	%	21.00	21.51	22.02	22.54	21.00	21.51	22.02	22.54	21.32	21.78	22.24	22.70

Electrical data NMOT		NHO108-410MN	NHO108-420MN	NHO108-430MN	NHO108-440MN	NHO108-410MNB	NHO108-420MNB	NHO108-430MNB	NHO108-440MNB	NHO120-460MNB	NHO120-470MNB	NHO120-480MNB	NHO120-490MNB
Peak power	Pmax	308	316	323	329	308	316	323	331	346	353	361	369
Max power voltage	Vmp	29.06	29.34	29.63	29.89	29.37	29.73	30.08	30.42	32.60	32.94	33.26	33.58
Max power current	Imp	10.61	10.76	10.91	11.07	10.50	10.63	10.75	10.88	10.61	10.73	10.85	10.99
Open circuit voltage	Voc	35.84±3%	36.02±3%	36.56±3%	35.92±3%	36.03±3%	36.39±3%	36.75±3%	37.11±3%	39.94±3%	40.25±3%	40.57±3%	40.89±3%
Short circuit current	Isc	11.23±3%	11.36±3%	11.49±3%	11.63±3%	11.16±3%	11.29±3%	11.42±3%	11.56±3%	11.29±3%	11.42±3%	11.56±3%	11.70±3%

Temperature and max ratings													
Max system voltage	V	1500											
Max series fuse rating	A	25						30					
Power tolerance		0~+3%											
Pmax temp coeff	W/°C	-0.300%/°C											
Voc temp coeff	V/°C	-0.250%/°C											
Isc temp coeff	A/°C	0.046%/°C											
NMOT temp	°C	45±2											
Operating and storage temp	°C	(-40 to 85)											

Packaging data													
Module per pallet		37/pallet											
Module per 20 container		222						888					
Module per 40 container		962											

Warranty													
Product workmanship	Years	15											
Power warranty	Years	30											
First year degradation	%	1											
Annual power degradation	%	0.4						0.4					

SKU/Model number		NHO144-550MN	NHO144-560MN	NHO144-570MN	NHO144-580MN	NHO132-670MN	NHO132-680MN	NHO132-690MN	NHO132-700MN
CA number	Units	44092	44094	44096	44098	44170	44171	44172	44173
Total capacity	kW	550	560	570	580	670	680	690	700

Features		Topcon							
Technology		Topcon							
No of cells		144(12*12)				132(12*11)			
Type		White							
Dimensions	mm	2278*1134*35				2384*1303*30			
Weight	kg	28.4				33.9			
Front glass		3.2 mm solar glass with anti-reflective surface treatment							
Junction box		IP68 3 diodes							
Frame		Anodized Aluminium Alloy							
Max wind and snow loads		2400Pa/5400Pa							

Electrical data STC		NHO144-550MN	NHO144-560MN	NHO144-570MN	NHO144-580MN	NHO132-670MN	NHO132-680MN	NHO132-690MN	NHO132-700MN
Peak power	Pmax	550	560	570	580	670	680	690	700
Max power voltage	Vmp	41.50	41.77	42.07	42.37	39.52	39.92	40.32	40.72
Max power current	Imp	13.26	13.41	13.55	13.69	16.96	17.04	17.12	17.20
Open circuit voltage	Voc	50.21±3%	50.47±3%	50.74±3%	51.02±3%	47.42±3%	47.90±3%	48.38±3%	48.86±3%
Short circuit current	Isc	14.00±3%	14.15±3%	14.31±3%	14.47±3%	17.72±3%	17.80±3%	17.88±3%	17.97±3%
Module efficiency	%	21.29	21.68	22.07	22.45	21.57	21.90	22.22	22.54

Electrical data NMOT		NHO144-550MN	NHO144-560MN	NHO144-570MN	NHO144-580MN	NHO132-670MN	NHO132-680MN	NHO132-690MN	NHO132-700MN
Peak power	Pmax	413	421	429	437	508	516	523	531
Max power voltage	Vmp	38.99	39.25	39.51	39.77	37.18	37.55	37.93	38.31
Max power current	Imp	10.61	10.73	10.85	10.97	13.65	13.71	13.78	13.84
Open circuit voltage	Voc	47.70±3%	47.94±3%	48.20±3%	48.46±3%	44.81±3%	45.27±3%	45.72±3%	46.17±3%
Short circuit current	Isc	11.30±3%	11.42±3%	11.55±3%	11.68±3%	14.12±3%	14.18±3%	14.25±3%	14.32±3%

Temperature and max ratings									
Max system voltage	V	1500							
Max series fuse rating	A	25				30			
Power tolerance		-3							
Pmax temp coeff	W/°C	-0.300%/°C				-0.240%/°C			
Voc temp coeff	V/°C	-0.250%/°C							
Isc temp coeff	A/°C	+0.046%/°C							
NMOT temp	°C	45±2							
Operating and storage temp	°C	(-40 to 85)							

Packaging data									
Module per pallet		37/pallet							
Module per 20 container		185				814			
Module per 40 container		740							

Warranty									
Product workmanship	Years	15							
Power warranty	Years	30							
First year degradation	%	1							
Annual power degradation	%	0.4							



# Inverter Specifications

Model HH3P-5KA1/HU  
Model HH3P-6KA1/HU  
Model HH3P-8KA1/HU  
Model HH3P-10KA1/HU

Model N1PH-1N3K  
Model N1PH-1N3.6K  
Model N1PH-1N5K  
Model N1PH-1N6K



SKU/Model number		HH3P-5KA1/HU	HH3P-6KA1/HU	HH3P-8KA1/HU	HH3P-10KA1/HU	N1PH-1N3K	N1PH-1N3.6K	N1PH-1N5K	N1PH-1N6K
CA number	Units	44174	44062	44063	44061	44064	44065	44066	44067
Total capacity	kW	5	6	8	10	3	3.6	5	6

Features									
PV connection	MC4 connector								
Battery connection	Quick connection plug								
AC connection	Quick connection plug								
Display	LED + Bluetooth + APP				LCD + OLED				

Input side DC (PV)									
Recommended max. PV power	kW	8	9.6	12.8	16	4.5	5.5	7.5	9
Max. input voltage	V	1000				600			
Rated voltage	V	600				360			
Start-up voltage	V	160				150			
MPPT voltage range	V	200-850				120-550			
Max. input current	A	16A/16A/16A		16A/16A/16A/16A		13.5A/13.5A			
Max. short circuit current	A	24A/24A/24A		24A/24A/24A/24A		17A/17A			
MPPT number		3	3	4	4	2	2	2	2
Max. input strings number per MPPT		1	1	1	1	1	1	1	1

Battery side									
Battery type	Li - ion								
Battery voltage range	V	120-600V				80-450V			
Max. charge / discharge power	kW	5	6	8	10	4.5/3	5.5/3.68	6/5	6/6
Max. charge / discharge current	A	25	25	50	50	25	25	25	25
Communication	CAN/RS 485								

Input side AC (Grid)									
Max. input power	kW	7.5	9	12	15	3	3.68	5	6
Rated input current	A	11.4	13.8	18.2	22.8	13	16	21.7	26.1
Rated input voltage	V	3L/N/PE, 380/400V				160-290V			
Rated input frequency	Hz	50/60Hz				45-55Hz/55-65Hz			

Output side AC (Back-up)									
Rated output power	kW	5	6	8	10	3	3.6	5	6
Back-up switch time		<10ms				<0.5s			
Rated output voltage		3L/N/PE, 380/400V				220/230/240V			
Rated frequency		50/60Hz				50/60Hz			
Rated output current		7.6A/7.2A	9.1A/8.7A	12.2A/11.5A	15.2A/14.4A	13A	16A	21.7A	26.1A
THDv (@linear load)		<2%				<3%			

SKU/Model number		HH3P-5KA1/HU	HH3P-6KA1/HU	HH3P-8KA1/HU	HH3P-10KA1/HU	N1PH-1N3K	N1PH-1N3.6K	N1PH-1N5K	N1PH-1N6K
------------------	--	--------------	--------------	--------------	---------------	-----------	-------------	-----------	-----------

Output side AC (Grid side)									
Rated output power	kW	5	6	8	10	3	3.68	5	6
Max. apparent output power		8kVA, 60 sec	9kVA, 60 sec	12.8kVA, 60 sec	16kVA, 60 sec	3kVA	3.68kVA	5kVA	6kVA
Rated grid voltage	V	3L/N/PE, 380/400V				220/230/240V			
Rated grid output current	Hz	50/60Hz				50/60Hz			
Max. output current	A	7.6A/7.2A	9.1A/8.7A	12.2A/11.5A	15.2A/14.4A	13A	16A	21.7A	26.1A
Power factor		>0.99 (0.8 leading - 0.8 lagging)				0.8 leading - 0.8 lagging			
THDi		<3%				<2%			

General data									
Dimensions	mm	600*500*210			600*500*230			520*412*172	
Weight	kg	27.58			30.18			20	
Topology		Transformerless				Non-isolation			
Self-consumption		<25W				<15W			
Operating ambient temperature		(-25 to +60)°C				(-30 to +60)°C			
Protection rating		IP66				IP65			
Cooling concept		Natural convection				Natural convection			
Max. operation altitude		up to 4000m				2000m			
Grid connection standard		AS/NZS 4777.2:2020							
Safety/EMC standard		IEC/EN 62109-1/-2, IEC/EN 61000-6-1/-3							

Efficiency									
Max. efficiency	%	97.90%	97.90%	98.00%	98.00%	97.42%	97.45%	97.50%	97.50%
EU efficiency	%	96.80%	97.10%	97.40%	97.50%	97.15%	97.17%	97.20%	97.20%

Protection									
Anti-islanding protection		Yes							
Integrated AFCI (DC arc-fault circuit protection)		Yes							
Insulation resistor detection		Yes							
Residual current monitoring		Yes							
Output over current protection		Yes							
Output short protection		Yes							
Output over voltage protection		Yes							
Integrated DC switch		Yes							
DC reverse-polarity protection		Yes							
PV over voltage protection		Yes							
Battery reverse protection		Yes							



# Battery Specifications

Model HHS-1X5K

Model HHS-1X10K

Model HHS-1X15K

Model HHS-1X20K



Model NHS-1Y10K

Model NHS-1Y15K

Model NHS-1Y20K



SKU/Model number		HHS -1X5K	HHS -1X10K	HHS -1X15K	HHS -1X20K
CA number	Units	44053	44050	44051	44052
Total capacity	KWH	5	10	15	20

Features					
Cell type		LiFePO4 Prismatic Cell, High Voltage ESS			
Battery module		5kWh, 400V, 52kg			
No of battery module		1	2	3	4
Nominal energy	KWH	5	10	15	20
Usable energy (90% DOD)	KWH	4.5	9	13.5	18
Nominal charge current	A	6	12	18	24
Nominal discharge current	A	6.5	13	19.5	26
Nominal voltage	V	400V			
Operating voltage range	V	350-440V			

General data					
Dimensions	mm	653*597*189	653*912*189	653*1227*189	653*1542*189
Weight	kg	67	119	171	223
Communication		CAN/RS485/Wi-Fi/LAN			
Protection function		Over and under voltage protection, overcurrent, short circuit protection. High and low temperature protection.			
Cycle life		>6000 times (25°C, 0.5C/0.5C, 90% DOD, 70% EOL)			
Scalability		Scalable from 5kWh to 60kWh			
Protection rating		IP65			
Cooling type		Natural convection			
Working temperature charging		Charging: [-10,+50]°C			
Working temperature discharging		Discharging: [-20,+50]°C			
Working environment humidity		10%-95% (non condensation)			
Working altitude		≤2000 m (Derating over 2000m)			
Operating conditions		Indoor or outdoor			
Installation		Ground installation			
Certifications		IEC 62619, CE			
Transportation		UN 38.3			

Warranty		
Product warranty	Years	10

SKU/Model number		NHS-1Y10K	NHS-1Y15K	NHS-1Y20K
CA number	Units	44054	44055	44056
Total capacity	KWH	10.24	15.36	20.48

Features				
Cell type		LiFePO4 Pouch Cell , High Voltage ESS		
Battery module		5.12kWh, 102.4V, 45kg		
No of battery module		2	3	4
Nominal energy	KWH	10.24	15.36	20.48
Usable energy (90% DOD)	KWH	9.728	14.592	19.456
Nominal charge current	A	25	25	25
Nominal discharge current	A	40	40	40
Nominal voltage	V	204.8	307.2	409.6
Operating voltage range	V	182.4-230.4	273.6-345.6	364.8-460.8

General data				
Dimensions	mm	636*330*628	636*330*816	636*330*1004
Weight	kg	117	165	213
Communication		RS485/CAN/Wi-Fi/Bluetooth		
Protection function		Charge overvoltage, discharge under-voltage, overcurrent, over-temperature, short circuit protection, insulation fault protection, etc.		
Cycle life		6000 times (+25°C)		
Scalability		Scalable from 10kWh to 40kWh		
Protection rating		IP65		
Cooling type		Natural convection		
Working temperature charging		Charging: [-10,+50]°C		
Working temperature discharging		Discharging: [-20,+50]°C		
Working environment humidity		≤85% (RH)		
Working altitude		≤2000 m (Derating over 2000m)		
Operating conditions		Indoor or outdoor		
Installation		Ground installation		
Certifications		IEC62619, CE, IEC62638, UKCA		
Transportation		UN 38.3		

Warranty		
Product warranty	Years	10



## Customer Care

Visit the website for more information  
Australia: [haierhome.com.au](http://haierhome.com.au)

Customer support and service booking  
Australia: [support.haier.com.au/s/book-a-service](http://support.haier.com.au/s/book-a-service)



LEARN MORE ABOUT  
OUR PRODUCT HERE

# Haier